

The KRG logo is rendered in a bold, blue, sans-serif font. The letters are thick and blocky, with a slight shadow effect. The 'K' and 'R' are connected at the top, and the 'G' is a simple, rounded shape. The logo is positioned on the left side of the image, partially overlapping a white diagonal shape.

KRG

Your partner in precision engineering

Over 45 years
of heritage

The website URL 'krg-engservices.com' is written in a white, sans-serif font. It is preceded by a white right-pointing arrow. The text is located in the bottom right corner of the image, overlaid on a background of a satellite in space and a grinding wheel.

krg-engservices.com



Your partner in precision engineering

> Our Mission Statement

At **KRG** we have all committed to **Operational Excellence**, ensuring we provide our customers with high quality products and a service that exceed their expectation.

We will achieve this with our **FOCUS** approach by motivating each other to continually develop our skills and support in the development and continual improvement of our business.

With **FOCUS** we will lead each other with passion and by example, learning from our experiences be they positive or negative. We will assess the risks and opportunities as they are presented in an open and honest forum and foster a working environment where operational excellence and innovation is the norm.



➤ The Complete Solution

KRG Coatbridge facility is our Centre of Excellence for Precision Manufacture and Engineering of critical components and assemblies.

We specialise in asset new build and lifecycle solutions for clients covering a range of industries including Oil & Gas, MOD, Rail, Food, Renewables and Aerospace.

KRG has a long and well established track record dating back over 45 years and we continue to invest in our fleet of equipment to provide the highest standards of quality and service which our clients have come to expect.

- Precision Engineering and Manufacturing
- Special Purpose Manufacture
- Non Destructive Testing (NDT)
- Welding, Cladding and Post Weld Heat Treatment
- Coordinate Measuring Machine (CMM) and Quality Management
- Surface Treatments
- Assemblies and Testing
- Refurbishment and Upgrade



Over 45 years
of heritage





Our fully integrated service offers a 'one stop shop' solution for our client's complete precision engineering and manufacturing requirements, resulting in greater operational and commercial efficiencies.



> KRG Special Engineering Services

OIL & GAS

KRG has an esteemed track record supporting many OEM and Oil & Gas customers globally. Being a leading supplier of choice offering full turnkey solutions in the manufacture of various projects over 20 years, has escalated KRG within this Industry to a first class option.

DEFENCE

KRG carry great pride supporting the manufacture of critical components for projects within the defence sector. From submarine optronic components to battle group thermal imaging systems and sonar equipment.

RENEWABLES

Includes manufacturing of anchoring systems supporting floating wind farm projects as well as J-Tube cable array connections.

AEROSPACE

Since our AS9100 Rev D accreditation award in 2018, KRG are starting to break into aerospace manufacture and promoting a segregated workshop with 20,000 square metres of space within the Coatbridge facility with machine tool investment dedicated to this Industry.

FOOD

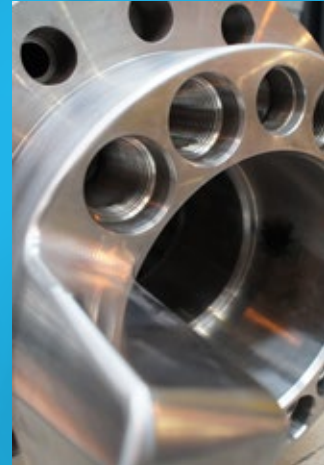
Design, manufacture and commissioning of various machines spanning over 40 years has put KRG as a No1 supplier within the Food Industry with outstanding testimonials from our major customer.



➤ Precision Engineering and Manufacturing

At KRG, we offer a fully integrated, turnkey service for Client precision engineering and manufacturing requirements. We take responsibility for every aspect of engineering projects, from procurement through to machining and assembly, ensuring all products are delivered on time and cost effective.

Our clients benefit from the dedicated support of our engineering team who optimise manufacturing processes, solve problems and reduce cost.



Machine Tool Overview

- Vertical Turning Lathes: Up to 1800mm diameter (Max height 2500mm)
- Large Turning: Up to 800mm diameter (Max 3200mm long)
- Medium Turning: Up to 600mm diameter (Max 3200mm long)
- Small Turning: Up to 300mm diameter (Max 1500mm long)
- Large Horizontal Boring Machines: Table size 1525mm x 2500mm (10000Kg)
- Vertical & Horizontal Machining Centres: Table size 800mm x 800mm (2000Kg)
- 4 Axis Machining Centres: Table size 1600mm x 750mm (1500Kg)
- 5 Axis Machining Centres: Up to 400mm Diameter (1500mm long)
- Spark and Wire Erosion

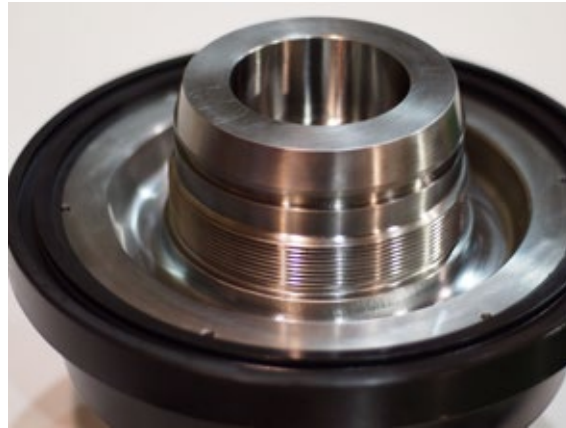
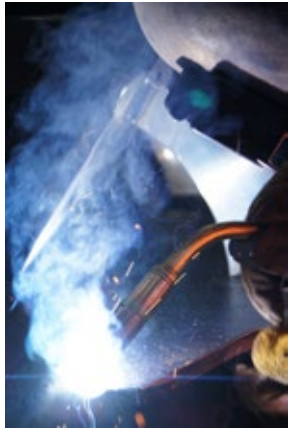
➤ Non Destructive Testing (NDT)

KRG offers highly effective NDT processes and services for examining the integrity, safety and reliability of critical and complex component parts. Carried out by our trained PCN II inspectors, our range of services provides clients with the confidence to make informed decisions about the life of their assets.

Our capabilities include:

- Liquid Penetrant Inspection (LPI)
- Magnetic Particle Inspection (MPI)
- Positive Material Inspection (PMI)
- Weld Clad Thickness (WCT)
- Ultrasonic Testing (UT)
- Phased Array Equipment and Testing
- Mobile Services





➤ **Welding, Cladding & Heat Treatment**

Welding procedures are instrumental in the provision of corrosion resistant overlays in both the manufacture of quality new parts and the reclamation of worn or damaged components.

KRG holds over 100 welding procedure specifications (WPS) and supporting procedure qualification records (PQR) by certifying authorities. This enables us to fulfil repairs to the highest quality standards, even on high pressure systems.

With a total of five Fronius cladding stations, we have worked with major testing houses to ensure chemical, mechanical and radiography tests are approved to ASME IX, API, NACE, AWS D1.1, ISO 15156, BS EN287/8, Norsok and other international standards.



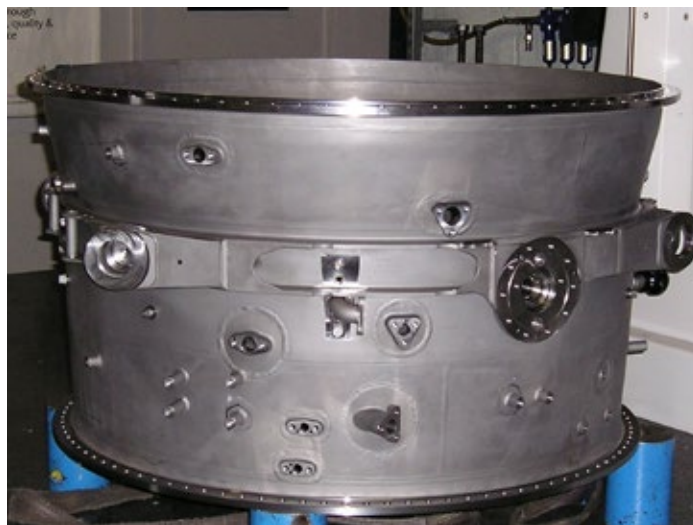
> CMM & Quality Management

To further enhance our quality assurance and increase our inspection capacity, KRG has invested in leading coordinate measuring machines (CMM) and software.

In line with our ongoing efforts for operational excellence and to provide the highest standards of quality and service to clients, ongoing investment in our equipment and services is essential.

We use continuous improvement initiatives such as Lean, 5S, Visual Management, and Key Performance Indicators (KPI's) to support our efficiency and quality targets and ensure we meet all compliance criteria.

Our highly skilled in-house personnel are trained to the following qualifications: CSWIP, NDT PCN Level II and NACE Coating Applicators & Inspectors.



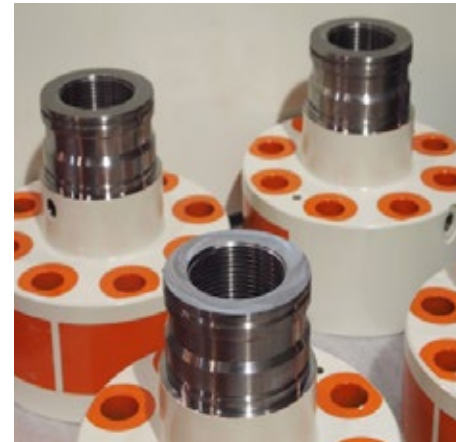
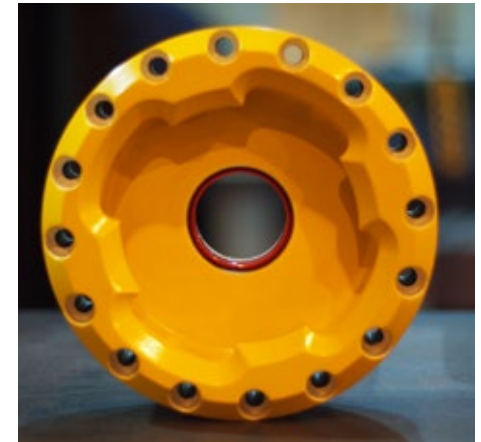
➤ Surface Treatments

KRG offers a range of high performance surface treatments. Our coating and painting processes protect and preserve to increase the life of critical components and assets and optimise their performance.

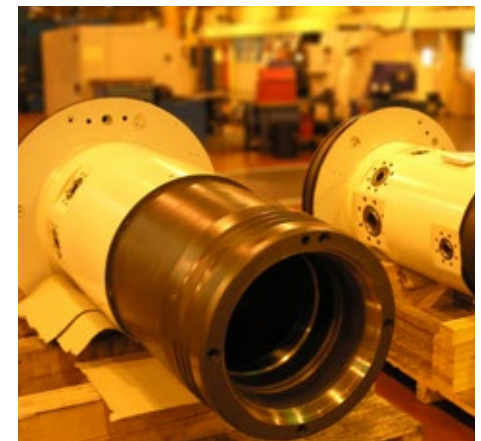
Within our dedicated coating facility, we have blast rooms, curing ovens, paint spray booths and a paint store.

Based on the size of our facilities, we can accommodate mass batches as well as large sized and small volume, high value components.

The range of coatings we can provide include thin film coatings such as Zinc Phosphate, Xylan, Molycote and Everslik. We also provide a large number high build paint systems to Norsok M-501.



**Work is
carried out by
Norsok trained
applicators and
NACE qualified
inspectors**



➤ Assembly & Testing

KRG has extensive experience in providing testing services for client equipment.

Tests can be conducted to national, international or industry standards or to the client's own enhanced test specification.

Assembly is carried out in-house and with supply chain partners we can undertake various types of testing including hydrostatic testing, gas testing, high pressure testing, load testing, site integration testing (SIT's) and factory acceptance testing (FAT's).



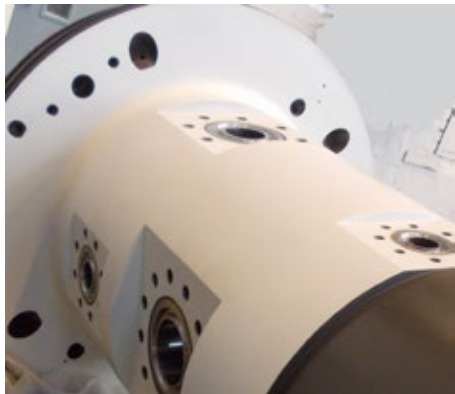
➤ Refurbishment & Upgrade

KRG offers a complete aftermarket service for our clients' assets ranging from planned maintenance programmes through to refurbishment projects, equipment repair and certification.

Once used parts have been removed from service, we can either repair or upgrade these parts then re-machine them back to their original state and exact specification for final testing and service.

We can manage projects of any size ranging from single spare parts through to the most complex assemblies across a variety of different industry sectors.

As our after-market services are all under one roof, we have the capability and capacity to reliably process work within tight turnarounds, helping to minimise project downtime.



> Special Purpose Manufacture

We engineer and manufacture special purpose machines according to our clients' exact project requirements and specifications. At KRG, we have delivered numerous unique machine solutions to clients worldwide, which is a testament to our specialist capabilities, skills and expertise.

Examples of past projects have included the design and manufacture of production line equipment for a leading food manufacturer, the engineering and build of staking rigs for computer chassis, the manufacture of crystal growing machines used in transatlantic fibre optic communications, and the manufacture of specialist aluminium extrusions to the cosmetics industry.





Your partner in precision engineering



Your partner in precision engineering

Trading Address

KRG Specialist Engineering Services
Limited
Russell Colt Street,
Coatbridge ML5 2BN

T: +44 (0) 1236 435659
E: info@krg-engservices.com
w: www.krg-engservices.com

Registered Business Address

Unit 5 Berrington Road,
Sydenham Industrial Estate
Royal Leamington Spa
Warwickshire
CV31 1NB



 krg-engservices.com